

# Difficult Decisions about the Beginning of Life

## Continuing and Emerging Challenges in Technological Societies

Josephine Johnston  
Director of Research & Research Scholar  
The Hastings Center  
Garrison, New York, USA

# Difficult decisions



# The view from where I stand



# Doing bioethics: Step 1

The Facts

Science + Social Science



The Clinical Context  
“Clinical Wisdom”



What Is



# Doing bioethics: Step 2

What Is

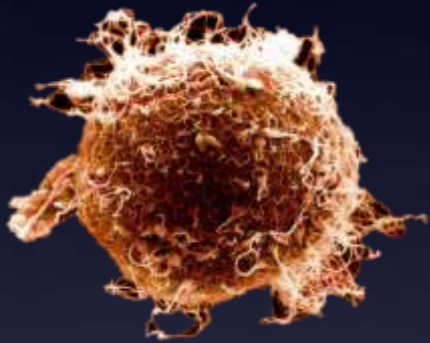


Moral Theories



What Ought To Be

# The moral significance of “beginning of life”



# Continuing and emerging challenges

- Contraception and abortion
- Assisted human reproduction
- Reproductive genetics
- G x E and epigenetics





# Focus: Assisted Human Reproduction

Who should have access?

Who pays?

Any restrictions on use?





# Focus: Reproductive Genetics

What should we test for?

How should tests be offered and results returned?

How can clinicians, policy makers, and societies support reasonable use?



# Harm to self: a thought to temper control



The Cardinal virtues, Strassbourg cathedral

Questions?